

# ARTIKELERLÄUTERUNG - ENTGRATSCHLEIFTELLER

Artikel-Nr. 120130105  
 Artikelbezeichnung Entgratschleifteller  
 FAPI-M14 K120J/BLUE  
 Abmessung 115 x 40 mm x M14

ab Werkzeugdurchmesser 125 mm (TRIM125, FIT, 150 und 250)  
 auch mit den Besatzvarianten doppelreihig und Y-Variante lieferbar!



einreihig (Standard)

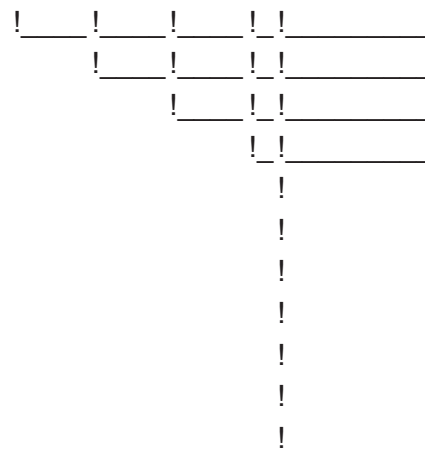


doppelreihig



Y-Variante

FAPI-M14 K120 J/BLUE



Friedrich August Picard GmbH & Co.KG

Werkzeugaufnahme <sup>1)</sup>

Korngröße Schleifgewebe

Kornart

V = Keramik

D = Aluminium-Oxid

T = Zirkonkorund

X = Aluminium-Oxid X-Gewebe

J = Aluminium-Oxid J-Gewebe

B = Siliciumcarbid J-Gewebe

Schleifvliesqualität <sup>2)</sup>

VIOLET-Line

DENIM-Line

BLACK-Line

1)



M14



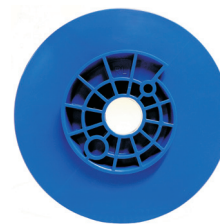
TRIM



TRIM125 RL  
(Rechtslauf)



TRIM125 LL  
(Linkslauf)



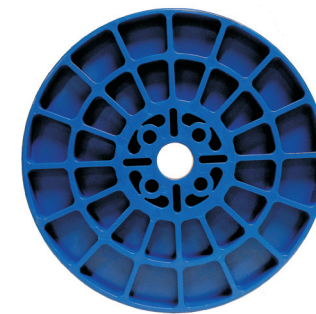
FIT RL  
(Rechtslauf)



FIT LL  
(Linkslauf)

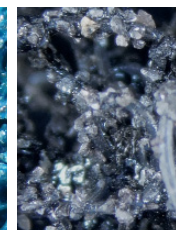
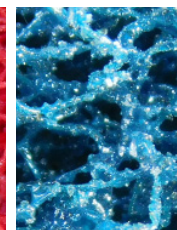
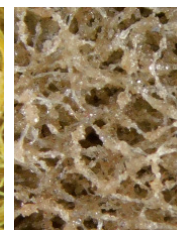
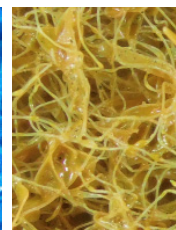
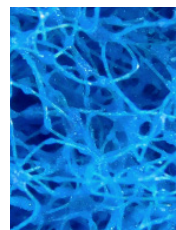
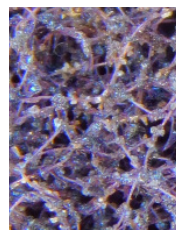
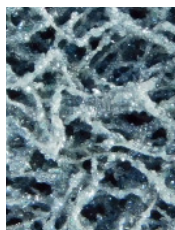
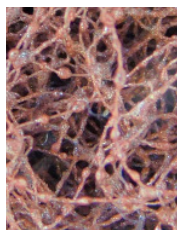
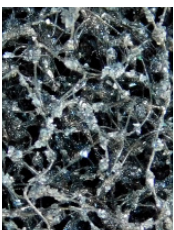
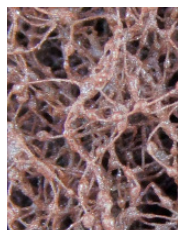
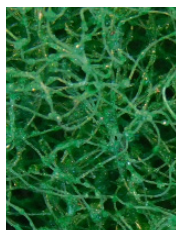


150



250

2)



GREEN

BROWN

DARKGREY

MAROON

GREY

VIOLET

BLUE

YELLOW

SAND

RED

DARKBLUE

GRV