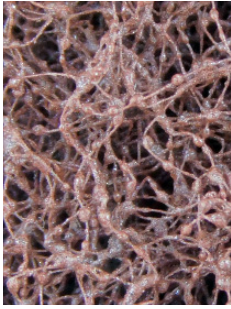


PICARD-GREEN (Standard-Fleece) *THE SOFT FLEECE!*

Interspersed with white corundum in grain size 320, which contains a high proportion of aluminium oxide as a characteristic. The abrasive grain has a higher hardness and toughness than a normal corundum, which proves to be an advantage in view of the grain size used here.

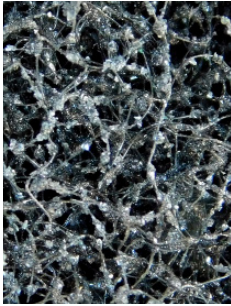
Application area: Deburring of thin sheet metal made of aluminium and steel with small holes or cuttings



PICARD-BROWN (Standard-Fleece) *ALLROUNDER!*

Interspersed with aluminium oxide (Al_2O_3) with grain size 280/320. The abrasive grain has a wedge-shaped/oval form and is very tough in its quality

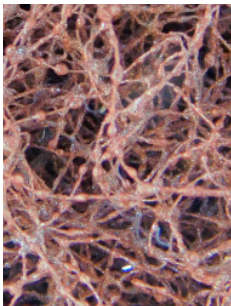
Application area: Deburring of different sheet types of aluminium, steel and stainless steel particularly for frequent change of materials



PICARD-DARKGREY (Special-Fleece) *SMOOTH AND FINE!*

Interspersed with silicon carbide (SiC) with grain size 180. Special fleece with high grain charge as well as good grain adhesion at the individual fibres. The tear-resistant material is particularly suitable for the treatment of aluminium sheets in the form of deburring discs of the series BLACK-line.

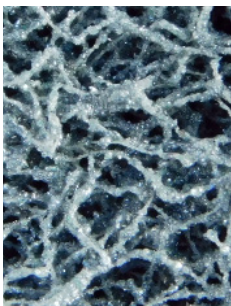
Application area: Deburring of aluminium sheets and plastic plates



PICARD-MAROON (Spezial-Fleece) *1ST IN HIGH STOCK REMOVAL!*

Interspersed with aluminium oxide (Al_2O_3) with grain size 180 with increased grain content. The abrasive grain has a wedge-shaped/oval form and is very tough in its quality. The abrasive fleece is relatively tear-resistant and yet offer good flexibility.

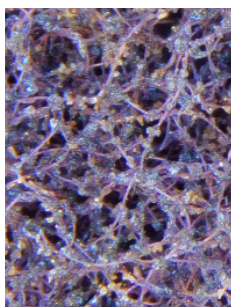
Application area: Intensive deburring of aluminium, steel and stainless steel, high stock removal on different sheets



PICARD-GREY (Special-Fleece) *SHARP GRIT!*

Interspersed with silicon carbide (SiC) with grain size 180 with increased grain content and compacted fleece structure. The abrasive grain used here has a pointed crystalline shape and is harder and more brittle than aluminium oxide. Particularly suitable for soft materials.

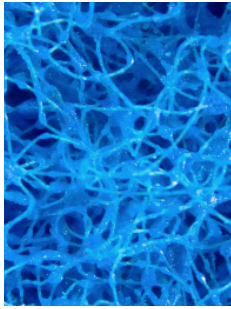
Application area: Deburring of NE-metals and plastics



PICARD-VIOLET (Special-Fleece) *HIGH GRADE!*

Interspersed with aluminium oxide (Al_2O_3) with grain size 180. Special fleece with increased grain content as well as good grain adhesion at the individual fibres. The tear-resistant material is particularly suitable for the treatment of stainless steel sheets in the form of deburring discs of the series VIOLET-line

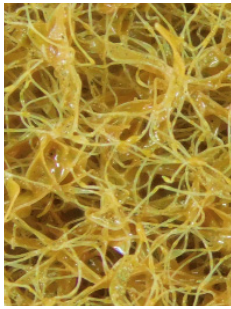
Application area: Deburring of stainless steel sheets



PICARD-BLUE (Special-Fleece) *SELF-SHARPING!*

Interspersed with zirconium corundum (ZA) with grain size 180, that exist of aluminium oxide (Al_2O_3) and zirconium oxide (ZrO_2). The abrasive grain has a wedge-shaped/oval form, composed by microcrystalline structure. Due to this structure, small parts of the grain break off again and again and during grinding and form new sharp edges.

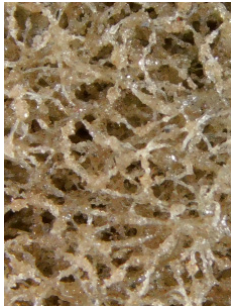
Application area: Deburring of steel, tool steel and stainless steel sheet, particularly thick sheet metal



PICARD-YELLOW (Special-Fleece) *WET & DRY! VERSATILITY!*

Interspersed with aluminium oxide (Al_2O_3) with grain size 180 and double impregnating. Due to the fleece thickness and good flexibility of the lamellae also suitable for sheet metal with a wide variety of inner contours. The abrasive fleece is relatively tear-resistant and yet offers good flexibility.

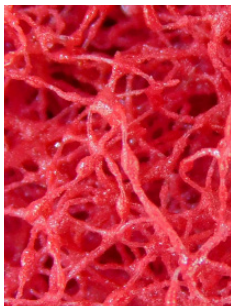
Application area: Deburring of steel, tool steel and stainless steel sheet, as well as wet deburring



PICARD-SAND (Special-Fleece) *CUT AND POLISH!*

Interspersed with aluminium oxide (Al_2O_3) with grain size 180 with increased grain content and compacted fleece structure. The abrasive grain has a wedge-shaped/oval form and is very tough in its quality.

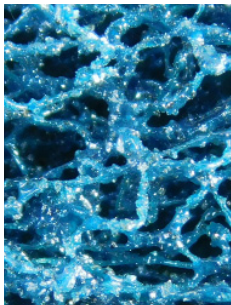
Application area: Deburring of steel, tool steel and stainless steel sheet



PICARD-RED (Special-Fleece) *ROUGH AND STRONG!*

Interspersed with aluminium oxide (Al_2O_3) with grain size 100 with open fabric and very high stock removal. Very good for long workpiece edges with greater burr formation.

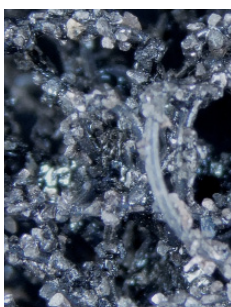
Application area: Deburring of steel parts or tool steel after flame cut



PICARD-DARKBLUE (Special-Fleece) *WIDE & FLEXIBLE!*

Interspersed with aluminium oxide (Al_2O_3) with grain size 100 and open fabric and very high stock removal. The abrasive grain has a wedge-shaped/oval form and is very tough in its quality. The special bond of the abrasive grain enables high material removal and a considerably longer service life in comparison to non-wovens of the same category with regard to grain type and size, especially in the field of non-ferrous metals.

Application area: Deburring of steel, stainless steel or NE metals, satin finish of aluminum surfaces, high stock removal



PICARD-GRV (Special-Fleece) *THE WATER-RESTITENT!*

Interspersed with silicon carbide (SiC) with grain size 60. The abrasive grain used here has a pointed crystalline shape and is harder and more brittle than aluminium oxide. An open fleece structure prevents clogging and thus additional scratching of the surface by loose ships.

Application area: Deburring of steel, stainless steel and aluminium, also on wet deburring machines